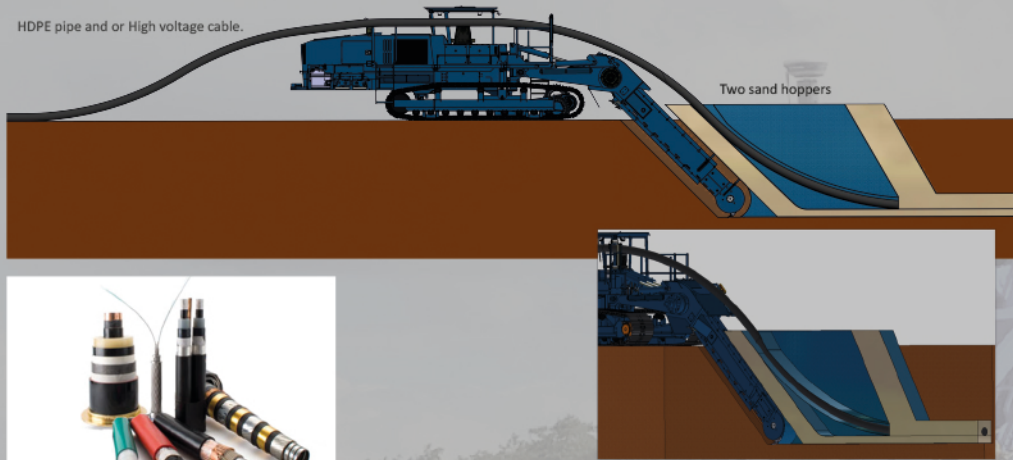


HDPE pipe and or High voltage cable.



The machine can be used for rolling out and trenching in different types of cable, this cable can be laid in a sand bed with both top and under cover.



The machine can also be used to trenching different diameter pipes, this varies up to 800 mm with a minimal disturbance of the soil structure. Other diameters and specials on demand.

Partners :



**DUTCH ORANGE TRADING B.V.**  
info@dutchorangetrading.com

The activities of Dutch Orange Trading are the supply of parts, raw materials and maintenance work.



**DUTCH ORANGE EQUIPMENT B.V.**  
info@dutchorangeequipment.com

The activities of Dutch Orange Equipment are the supply and production of extruder lines and trenchers and the associated peripheral equipment.



**DUTCH ORANGE MARINE B.V.**  
info@dutchorangemarine.com

The activities of Dutch Orange Marine are the supply of Buoys, Radar systems and other related systems.

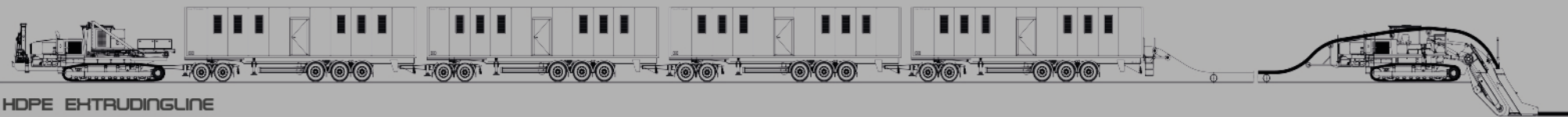


**Dutch Orange Europe B.V.**  
de Darink 1  
NL-4756CR Kruisland  
The Netherlands  
Tel +31 (0) 165- 326454  
info@dutchorangeeurope.com



HDPE PIPE PRODUCTION & TRENCHING SOLUTIONS





## HDPE EXTRUDING LINE

Dutch Orange Equipment is a young company who is dedicated to innovation and development in machines. The focus in the last years was how to create a step forward with HDPE pipelines and on request Antibacterial. The answer to this is the Trencher. A Trencher is driving behind an extruding line that produces the pipeline, this is also possible when the pipeline has already been produced. The Trencher is specially redeveloped for:

- HDPE pipe in line ( on request Antibacterial )
- HDPE pipe on a rol ( on request Antibacterial )
- HDPE pipe produced ( Stationary ) on site
- HDPE pipe produced ( Mobile on Tracks or Wheels) in the field
- High Voltage cable
- Steel pipes

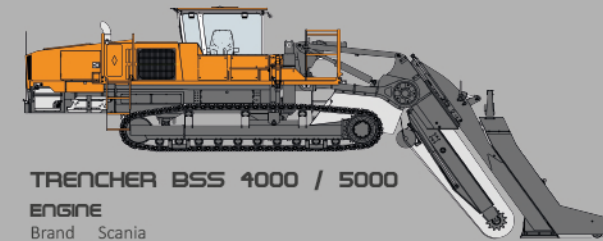
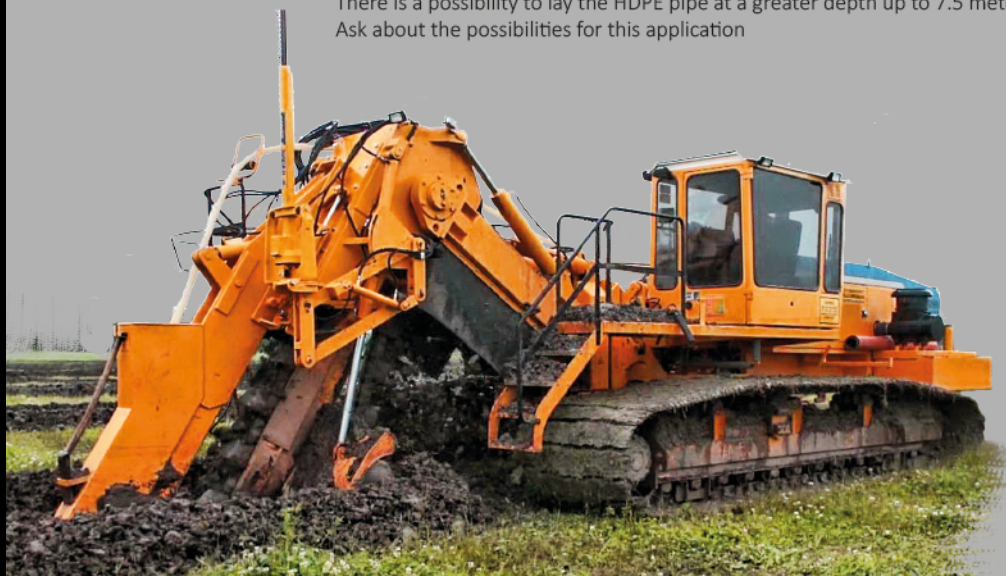
All these developments were to reduce to following:

- CO2 production
- Transport costs
- On site crane activities
- Leadtime of the project



### TRENCHER BSV 5000 / 7500

There is a possibility to lay the HDPE pipe at a greater depth up to 7.5 meters. Ask about the possibilities for this application



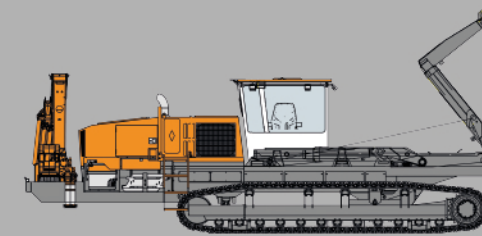
### TRENCHER BSS 4000 / 5000

#### ENGINE

Brand Scania  
Type DC13  
Stage Stage IV Final  
Power 405 kW / 550 hp

#### TRENCHING SYSTEM

Drive line Hydrostatic drive system- GPS or laser prepared  
Hydraulic motors 2x high torque motors- 2000 cc  
Final drive Lifetime seals  
Trench width 175- 700 mm  
Depth range 2.300 mm  
Max. trench depth 3.000 mm (5.000 mm deep trenching)  
Control by means of electric joystick- stepless adjustable  
Travel speed 0- 5.000 m/s



### DOSC 7700 CARRIER

#### ENGINE

Brand Scania  
Type DC16  
Stage Stage IV Final  
Power 566 kW / 770 hp

#### HOOKLIFT SYSTEM

Brand VDL  
Type S25-4750  
Length 4,750 m  
Capacity 25 Ton

#### CRANE

Brand Hiab X-HIDUO 158 B-3  
Hydraulic Extension Outreach 10,6 m  
Lifting capacity (tm) 15.3